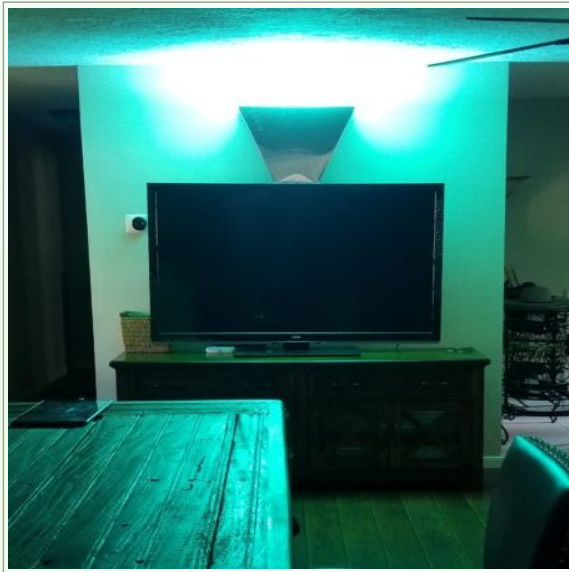


Room Air Vac – Complete UV + Ozone Room Sterilization



The EFC UV-KLEEN™ Room Air Vac is a high intensity UV and Ozone sanitizing wall mounted fixture for interior areas. The contaminated air is pulled into the unit using built in fans where the air is sterilized by the UV lamp and clean air is pushed out the top of the fixture. U.S. FDA Registered.

The Room Air Vac:

- Permanently hard-wired to the wall facing up
- Two 106 CFM fans to air exchange a 20'x20'x8' room in just 15 minutes.
- **Designed and Made in the USA.**

Applications:

Hospitals, clinics, shops, offices, classrooms, restaurants, public restrooms, and more.

GENERAL SPECIFICATIONS

OPERATING VOLTAGE

120-277Vac, 45-65 Hz

OPERATING FREQUENCY

45-65Hz

WATTAGE

100w and 300w

UV WATTAGE (uW/cm²)

100W Model – 35,700 @ 2in, 440 @ 39in (1mt)

300W Model – 40,000 @ 2in, 1300 @ 39in (1mt)

TECHNOLOGY

Germicidal 253.7nm, Arc-discharge controlled Ozone

SAFETY APPROVALS

UL, CE, ETL, RoHS, EMI/EMC compliance

OPERATING ENVIRONMENT

Approximately 25°C to 65°C

CONNECTION

Hardwired by a certified electrician

Wire leads. Size: 14 AWG Length: 3'

MATERIALS

Premium stainless steel (304), 14 AWG 600 V rated Wire.

Ballast (in Aluminum) circuit encapsulated in epoxy to retain integrity of circuitry in failure mode.

Optional Accessories

Ozone generator, remote module, motion sensor, contact sensor

DIMENSIONS & WEIGHT

100W Model = 18" top, 10lbs; 300W Model = 24" top, 15lbs

WARRANTY

Lamp and Ballast: 5 year; Other Electronics: 1 year

WHAT'S IN THE BOX

- 1) Pre-assembled UV-KLEEN™ proprietary UV and Ozone system
- 2) 14 AWG wiring connection
- 3) Instruction Manual

Quick Installation Instructions

- 1) Permanent wall installation, wired by a certified electrician
- 2) Minimum mounting height to top of fixture to be 7ft AFF

EFC Room Air Vac Product Ordering Guideline

Model Number

UVK-RAV W

300

UV

O R C

Wattage

Lamp

Optional

Wattage: 100 = 100w
300 = 300w

Lamp: UV = UV lamp only
UVO = UV + Ozone lamp

Optional: O - Ozone generator
R - Remote control
C - Controls (Motion and Contact)

